



The Sky is the Limit!

In the heart of the Land of Enchantment, discover Isleta Casino and Resort, New Mexico's finest. Just minutes from Albuquerque's airport, Isleta has something for everyone, including our brand new Resort Hotel & Convention Center.

Isleta's the place for hot casino action with more than 1,600 slots, table games and poker. You'll love the dining and entertainment choices. Tee off at our 27-hole golf course, take the entire family to the Isleta Fun Connection, or go fishing at our beautiful Isleta Lakes and Recreation Area.

The luxurious, new resort hotel opened July 1 with more than 200 beautifully decorated rooms and suites, an extravagant tranquil spa, a 24-hour café, an Asian bistro, New Mexico's hottest new nightclub, and a kids activity center.
At Isleta Casino & Resort...We've Got It All!



ISLETA
CASINO & RESORT™

NOW TAKING RESERVATIONS!
Call 1.8.777.ISLETA ext. 1999
11000 Broadway SE • Albuquerque, NM 87105
1.8.777.ISLETA • isleta.com

Portrait ALBUQUERQUE



New Mexico Museum of Art, top; vendors' wares (below) in downtown Santa Fe.

Get Out of Town

Albuquerque makes a great home base for excursions north and south

By Megan Kamerick

The charming town of Santa Fe is an hour away from Albuquerque via Interstate 25. For a far more scenic drive, take New Mexico State Road 14, also called the Turquoise Trail, with interesting stops such as Tinkertown Museum in Sandia Park and the Old Coal Mine Museum in Madrid. In Cerrillos, dusty streets evoke its bygone days as one of the most important centers of turquoise mining in the Southwest.

Santa Fe itself draws artists and art lovers. The town may be best known as the home of Georgia O'Keeffe. At the museum named for the painter, catch "Georgia O'Keeffe and Ansel

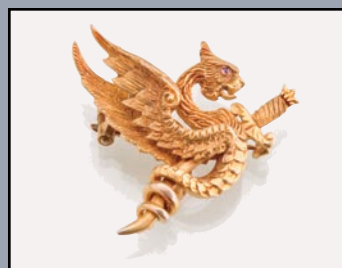
Adams: Natural Affinities," which runs through the first week of September and brings together almost 100 works by the two artists.

Galleries line Canyon Road and cluster near the historic downtown plaza, which hosts free concerts in the summer. Nearby, along the wall of the Governor's Palace, Native American artisans sell jewelry. Museums abound in the city. For Native American arts and crafts, visit the Wheelwright Museum of the American Indian. Summer brings Indian Market, Spanish Market, the International Folk Art Market and Art Santa Fe. At the Santa Fe Opera, about six miles north of the plaza, ticket holders tailgate in style before



strolling into the open-air theater in everything from tuxedos to cowboy boots.

Since the turn of the century, the pretty village of Taos at the base of the Sangre de Cristo Mountains has drawn artists and writers such as



BUYERS AND SELLERS OF DIAMONDS AND ESTATE JEWELRY

BEAUCHAMP
JEWELERS

7017 Manual NE, Albuquerque, NM • 505-881-8939 • www.bcjewelers.com

Luxury resort opens in Santa Fe

Encantado, an Auberge Resort, opens this month in Tesque, 10 minutes from Santa Fe's historic plaza. The resort offers 65 adobe-style casitas with a contemporary interpretation of traditional Santa Fe design, including kiva-style fireplaces indoors and private terraces offering stunning views of the Jemez Mountains and Rio Grande river valley.

In the main lodge, Terra, under the direction of Executive Chef Charles Dale, will serve modern rustic fare, using organic seasonal produce to reinterpret regional cuisine. Building on the area's renown as a center for the arts and spirituality, the spa will offer a variety of healing treatments indigenous to the region.

www.Encantadoresort.com

D.H. Lawrence, buried north of town. Visit the Millicent Rogers Museum to see almost 1,000 pieces of Native American jewelry, along with textiles, pottery, baskets and other crafts. Several museums touch on the history of the Taos Society of Artists, including the Harwood Museum of Art and the Blumenschein Home and Museum, both near the plaza. The Fechin House showcases the colorful paintings and extraordinary wood carvings of Russian artist Nicolai Fechin. Like Santa Fe, Taos has dozens of galleries with art from traditional to contemporary, from local and national artists and craftspeople.

In winter, the Taos Ski Valley lures visitors to its challenging slopes.

Taos Pueblo, a United Nations World Heritage site, is among the oldest continually inhabited places in the country. The entire pueblo, or village, is made of adobe; some of the structures are multi-storied.

About 10 miles west of town, get your thrills by walking the Rio Grande Gorge Bridge, the country's second highest expansion bridge, with a 650-foot drop to the river.

An hour or so south of Albuquerque, the town of Socorro traces its roots to the earliest Spanish expeditions. The historic plaza and the nearby Bosque del Apache National Wildlife Refuge, a birder's paradise with cranes and snow geese in winter, are worth the stop. The Camino Real International Heritage Center details the history of the "royal road" and its impact on the state. About 50 miles west of Socorro, find the National Radio



ISTOCK PHOTO

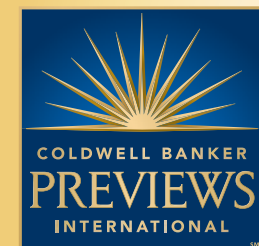
Taos Pueblo opens to visitors most days from early spring to late winter.

Astronomy Observatory, or Very Large Array (featured prominently in the Jodie Foster film *Contact*).

The rustic town of **Truth or Consequences** bills itself as the most affordable spa town in America. Once called Hot Springs because of natural springs in the area, the town gained new publicity when leaders renamed it after the famous game show in the 1950s. Sierra Grande Lodge & Spa is the most upscale site for mineral baths. The others are a mix of renovated retro motor courts and more modest hotels, all of which give the town a pleasantly funky feel.

In **Las Cruces**, visitors head for Old Mesilla, a historic village south of the city founded by Hispanic residents. Shops sell Native American and Mexican crafts around a historic plaza and the Basilica of San Albino, where the bells are still rung by hand. La Posta restaurant occupies the building that once served as a way station for the Butterfield Overland Mail and Wells Fargo stagecoaches.

The village began on the other side of the Rio Grande from Las Cruces. But the river changed course in 1885, putting Mesilla back on American soil. As the sun sets, head down a quiet side street past a flowing acequia and you might swear you're still in Mexico.



Can you see yourself living in the Land of Enchantment?

We can help make that vision a reality.

1-800-866-8700

www.ColdwellBankerLegacy.com
Relocation@CBLegacyNM.com

*Albuquerque · Santa Fe · Taos
New Mexico · USA*

Inspiring
NEW MEXICANS SINCE 1874



www.csf.edu/abq
COLLEGE OF SANTA FE
ALBUQUERQUE